

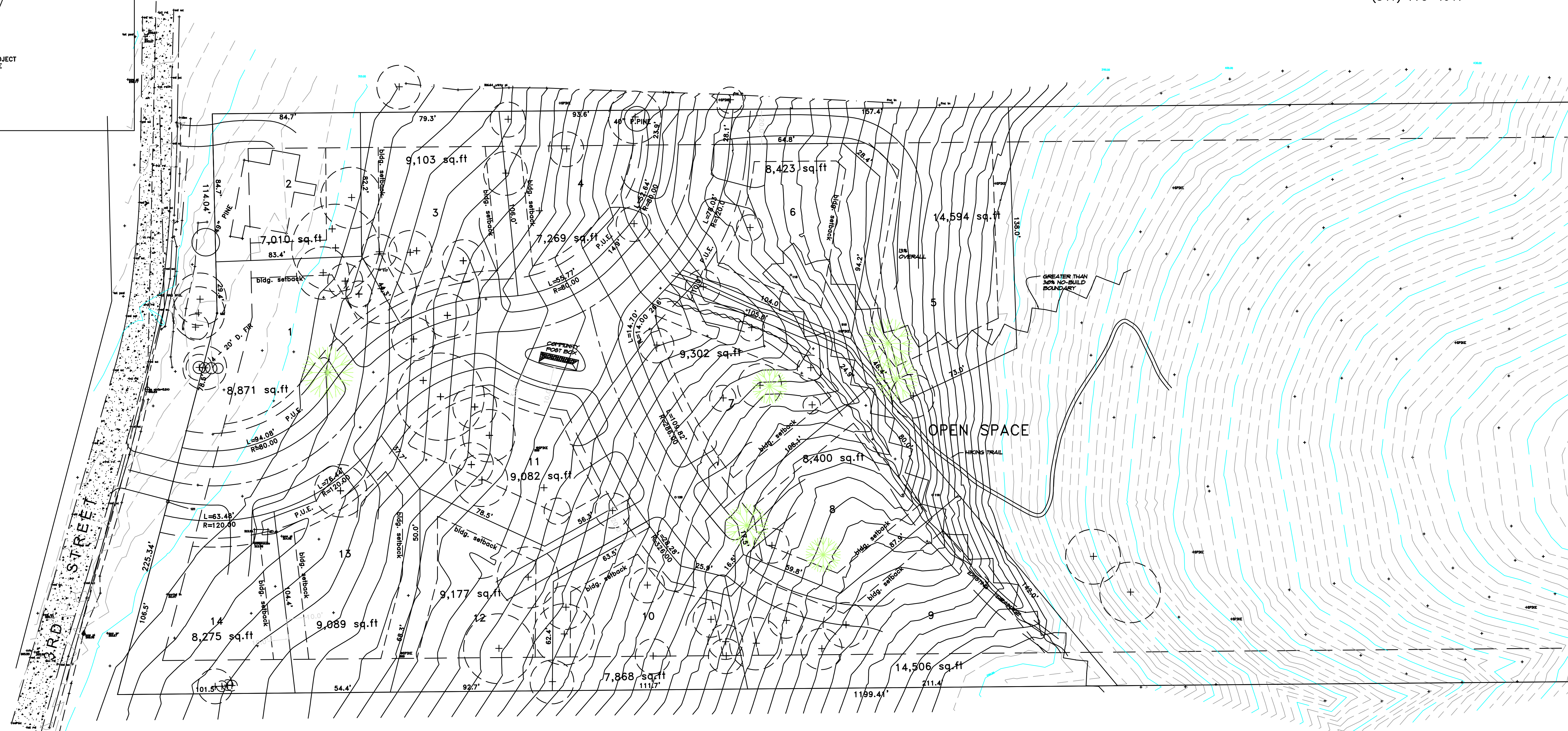
TENTATIVE PLAT

FOR
ANDREWS PLACE
A PLANNED UNIT DEVELOPMENT

Located in:
the SW 1/4, Section 32, T31, R2W, W1,
City of Jacksonville, Jackson County, Oregon

OWNER/APPLICANT
TOM OWINGS
945 SUNSET HILLS LN
REDLANDS, CA 92373
(909) 248-6450

SURVEYOR
HOFFBUHR & ASSOCIATES, INC.
880 GOLFVIEW DRIVE
MEDFORD, OREGON 97504
(541) 779-4641



OPEN SPACE

GREATER THAN 30% NO-BUILD BOUNDARY

NOTE:
Contours are at 2' intervals
Index contours are at 10' intervals

TOTAL AREA
384,849 sf
8.835 ac.

 HOFFBUHR & ASSOCIATES, INC. <small>(SURVEYORS/PLANNERS)</small> 880 GOLF VIEW DR., SUITE 201 MEDFORD, OR 97504 (541) 779-4641 FAX (541) 770-2573	BY: DARRELL L. HUCK	L6 * 2023
	PROJECT: OWINGS	
	PROJECT NO: 00-250	
	DRAWING FILE NO: 00250\stent\p9\pldwg	
	SCALE: 1" = 30'	December 11, 2006
	REVISION NO:	
REVISION DATE:		
SHEET 1 OF 1		
BASIS OF BEARING:	SURVEY NO. 1431	
ELEVATION DATUM:	ASSUMED	
DRAWN BY:	DLH	
REVIEWED BY:	INITIALS	